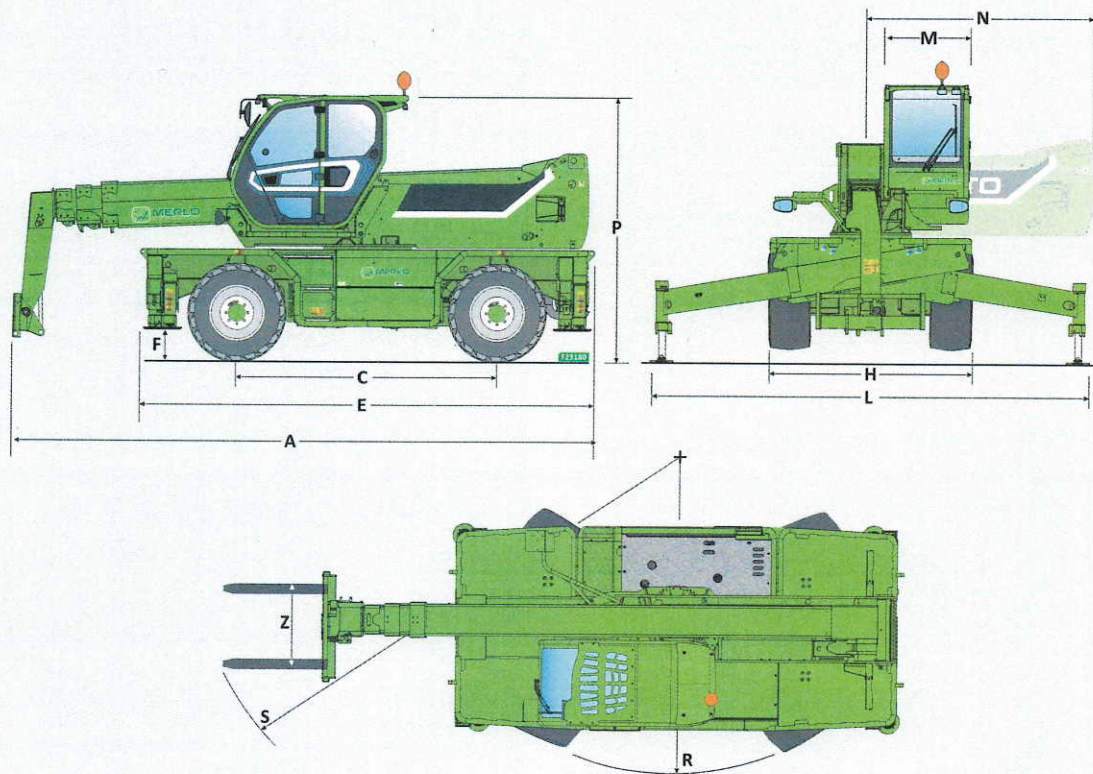


Caratteristiche tecniche



| Dimensioni | | A | C | E | F | H | L | M | P | R | S | N | |
|------------|-------------------|----|------|------|------|-----|------|------|------|------|------|------|------|
| ROTO 400 | ROTO 40.16 | mm | 6280 | 2860 | 4750 | 290 | 2240 | 3750 | 1010 | 2980 | 4000 | 5930 | 2300 |
| | ROTO 40.16 S | mm | 6280 | 2860 | 4750 | 290 | 2240 | 3750 | 1010 | 2980 | 4000 | 5930 | 2300 |
| | ROTO 40.18 | mm | 6030 | 2860 | 4750 | 290 | 2240 | 3750 | 1010 | 2980 | 4000 | 5750 | 2300 |
| | ROTO 40.18 S | mm | 6030 | 2860 | 4750 | 290 | 2240 | 3750 | 1010 | 2980 | 4000 | 5750 | 2300 |
| ROTO Big | ROTO 50.21 | mm | 6830 | 3070 | 5370 | 370 | 2430 | 5010 | 1010 | 3120 | 3850 | 6100 | 2600 |
| | ROTO 50.21 S | mm | 6830 | 3070 | 5370 | 370 | 2430 | 5010 | 1010 | 3120 | 3850 | 6100 | 2600 |
| | ROTO 50.21 S Plus | mm | 6830 | 3070 | 5370 | 370 | 2430 | 5010 | 1010 | 3120 | 3850 | 6100 | 2600 |
| | ROTO 50.26 | mm | 7150 | 3070 | 5370 | 370 | 2430 | 5010 | 1010 | 3120 | 3850 | 6310 | 2600 |
| | ROTO 50.26 S | mm | 7150 | 3070 | 5370 | 370 | 2430 | 5010 | 1010 | 3120 | 3850 | 6310 | 2600 |
| | ROTO 50.26 S Plus | mm | 7150 | 3070 | 5370 | 370 | 2430 | 5010 | 1010 | 3120 | 3850 | 6310 | 2600 |
| | ROTO 50.30 S Plus | mm | 7790 | 3200 | 5620 | 290 | 2490 | 5260 | 1010 | 3160 | 4500 | 6770 | 3170 |
| | ROTO 70.24 S Plus | mm | 7545 | 3200 | 5620 | 290 | 2490 | 5260 | 1010 | 3160 | 4500 | 6770 | 3170 |
| ROTO "35" | ROTO 50.35 Plus | mm | 8590 | 3780 | 6910 | 315 | 2540 | 6320 | 995 | 3325 | 4840 | 7130 | 3690 |
| | ROTO 70.28 Plus | mm | 8310 | 3780 | 6910 | 315 | 2540 | 6320 | 995 | 3325 | 4840 | 6920 | 3690 |

| | ROTO 16-18 | | | | ROTO 21-26 | | | | | |
|---|----------------------|----------------------|----------------------|----------------------|----------------------|----------------------|----------------------|----------------------|----------------------|----------------------|
| Modello | ROTO40.16 | ROTO40.16 S | ROTO40.18 | ROTO40.18 S | ROTO50.21 | ROTO50.21 S | ROTO50.21 S PLUS | ROTO50.26 | ROTO50.26 S | ROTO50.26 S PLUS |
| Prestazioni | | | | | | | | | | |
| Massa totale a vuoto (kg) | 12900 | 13000 | 13500 | 13600 | 15800 | 15800 | 16500 | 16600 | 16600 | 17300 |
| Massima portata (kg) | 4000 | 4000 | 4000 | 4000 | 4950 | 4950 | 4950 | 4950 | 4950 | 4950 |
| Altezza di sollevamento (m) | 15,8 | 15,8 | 17,7 | 17,7 | 21 | 21 | 21 | 25,9 | 25,9 | 25,9 |
| Massimo sbraccio (m) | 13,2 | 13,2 | 15 | 15 | 17,9 | 17,9 | 17,9 | 22,9 | 22,9 | 22,9 |
| Livellamento del telaio (%) | - | +/-12, +/-4 | - | +/-12, +/-4 | - | +/-12, +/-4 | +/-12, +/-4 | - | +/-12, +/-4 | +/-12, +/-4 |
| Powertrain | | | | | | | | | | |
| Motore | FPT F34 | FPT F36 | FPT F34 | FPT F36 | Deutz TCD3.6 | FPT NEF45 | FPT NEF45 | Deutz TCD3.6 | FPT NEF45 | FPT NEF45 |
| Potenza motore (kW/HP) | 55,4/75 | 90/122 | 55,4/75 | 90/122 | 55,4/75 | 125/170 | 125/170 | 55,4/75 | 125/170 | 125/170 |
| Tecnologia anti inquinamento | Stage V, DOC+DPF | Stage V, SCR+DOC+DPF | Stage V, DOC+DPF | Stage V, SCR+DOC+DPF | Stage V, DOC+DPF | Stage V, SCR+DOC+DPF | Stage V, SCR+DOC+DPF | Stage V, DOC+DPF | Stage V, SCR+DOC+DPF | Stage V, SCR+DOC+DPF |
| Velocità massima (km/h) | 25 | 40 | 25 | 40 | 25 | 40 | 40 | 25 | 40 | 40 |
| Serbaio carburante (l) | 140 | 140 | 140 | 140 | 150 | 150 | 150 | 150 | 150 | 150 |
| Serbaio AdBlue (l) | - | 18 | - | 18 | - | 43 | 43 | - | 43 | 43 |
| Trasmissione idrostatica | SI - 2V | SI - 2V | SI - 2V | SI - 2V | SI - 2V | SI - 2V | SI - 2V | SI - 2V | SI - 2V | SI - 2V |
| EPD | STD | STD | STD | STD | STD | STD | STD | STD | STD | STD |
| Idraulica | | | | | | | | | | |
| Pompa idraulica | LS + FS | LS + FS | LS + FS | LS + FS | LS + FS | LS + FS | 2 - LS + FS | LS + FS | LS + FS | 2 - LS + FS |
| Portata/pressione (l/min - bar) | 103,5 - 250 | 103,5 - 250 | 103,5 - 250 | 103,5 - 250 | 103,5 - 250 | 138 - 250 | 138+100 - 250/230 | 103,5 - 250 | 138 - 250 | 138+100 - 250/230 |
| Serbaio olio idraulico (l) | 162 | 162 | 162 | 162 | 120 | 120 | 120 | 120 | 120 | 120 |
| Cabina | | | | | | | | | | |
| Allestimento cabina | PREMIUM | PREMIUM | PREMIUM | PREMIUM | PREMIUM | PREMIUM | PREMIUM | PREMIUM | PREMIUM | PREMIUM |
| ASCS | Completo | Completo | Completo | Completo | Completo | Completo | Completo | Completo | Completo | Completo |
| Cabina FOPS/ROPS | SI | SI | SI | SI | SI | SI | SI | SI | SI | SI |
| Comandi cabina | Joystick elettronico | Joystick elettronico | Joystick elettronico | Joystick elettronico | Joystick elettronico | Joystick elettronico | Joystick elettronico | Joystick elettronico | Joystick elettronico | Joystick elettronico |
| Cabina Basculante | - | - | - | - | NO | NO | SI | NO | NO | SI |
| Inversore | Dual reverse | Dual reverse | Dual reverse | Dual reverse | Dual reverse | Dual reverse | Dual reverse | Dual reverse | Dual reverse | Dual reverse |
| Configurazione | | | | | | | | | | |
| Sospensioni su assale | NO | SI | NO | SI | NO | SI | SI | NO | SI | SI |
| Tac-lock | SI | SI | SI | SI | SI | SI | SI | SI | SI | SI |
| Predisposizione Navicella | SI | SI | SI | SI | SI | SI | SI | SI | SI | SI |
| Trazione integrale | SI | SI | SI | SI | SI | SI | SI | SI | SI | SI |
| 4 ruote sterzanti, tre modi di sterzata | SI | SI | SI | SI | SI | SI | SI | SI | SI | SI |
| Pneumatici standard | 400/70-20 | 400/70-20 | 400/70-20 | 400/70-20 | 18-22.5 | 18-22.5 | 18-22.5 | 18-22.5 | 18-22.5 | 18-22.5 |
| Stabilizzatori | On/Off | On/Off | On/Off | On/Off | Multi-position | Multi-position | Multi-position | Multi-position | Multi-position | Multi-position |
| Rotazione torretta | 415° | 415° | 415° | 415° | 600° | Continua | Continua | 600° | Continua | Continua |

ROTO 24-35

| ROTO50.30 S PLUS | ROTO70.24 S PLUS | ROTO50.35 PLUS | ROTO70.28 PLUS |
|------------------|------------------|----------------|----------------|
| 20500 | 20200 | 23350 | 22750 |
| 4950 | 7000 | 4950 | 7000 |
| 29,2 | 24,2 | 34 | 28 |
| 25,4 | 20,5 | 27 | 23,2 |
| +/-12, +/-4 | +/-12, +/-4 | +/-12, +/-4 | +/-12, +/-4 |

| FPT NEF45 | FPT NEF45 | FPT NEF45 | FPT NEF45 |
|----------------------|----------------------|----------------------|----------------------|
| 125/170 | 125/170 | 125/170 | 125/170 |
| Stage V, SCR+DOC+DPF | Stage V, SCR+DOC+DPF | Stage V, SCR+DOC+DPF | Stage V, SCR+DOC+DPF |
| 40 | 40 | 40 | 40 |
| 150 | 150 | 150 | 150 |
| 43 | 43 | 43 | 43 |
| SI - 2V | SI - 2V | CVTronic | CVTronic |
| STD | STD | STD | STD |

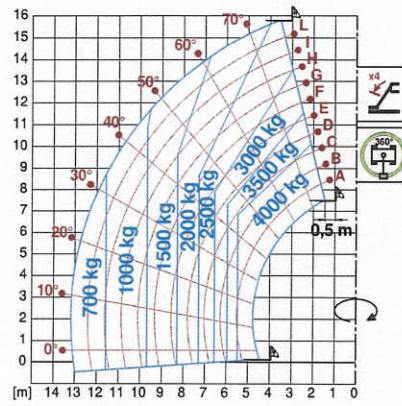
| 2 - LS + FS | 2 - LS + FS | 2 - LS + FS | 2 - LS + FS |
|-------------------|-------------------|---------------|---------------|
| 138+100 - 250/230 | 138+100 - 250/230 | 158+100 - 260 | 158+100 - 260 |
| 120 | 120 | 220 | 220 |

| PREMIUM | PREMIUM | PREMIUM | PREMIUM |
|----------------------|----------------------|----------------------|----------------------|
| Completo | Completo | Completo | Completo |
| SI | SI | SI | SI |
| Joystick elettronico | Joystick elettronico | Joystick elettronico | Joystick elettronico |
| SI | SI | SI | SI |
| Dual reverse | Dual reverse | Dual reverse | Dual reverse |

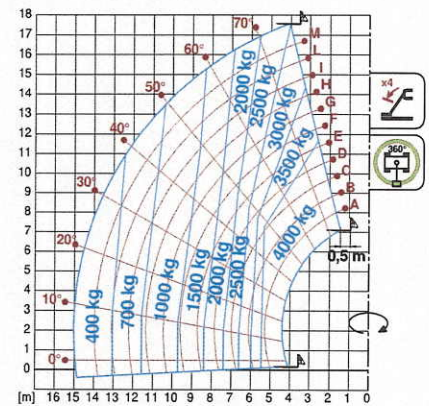
| | | | |
|----|----|----|----|
| SI | SI | SI | SI |
| SI | SI | SI | SI |
| SI | SI | SI | SI |
| SI | SI | SI | SI |
| SI | SI | SI | SI |

| | | | |
|----------------|----------------|----------------|----------------|
| 445/65 - 22,5 | 445/65 - R22,5 | 445/80 R 25 | 445/80 R 25 |
| Multi-position | Multi-position | Multi-position | Multi-position |
| Continua | Continua | Continua | Continua |

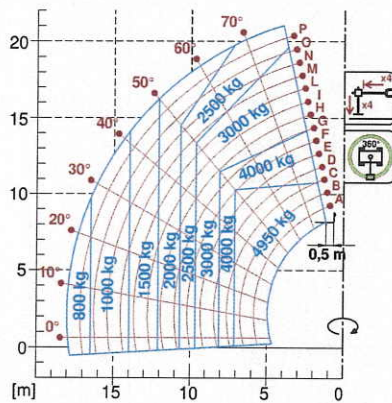
ROTO 40.16



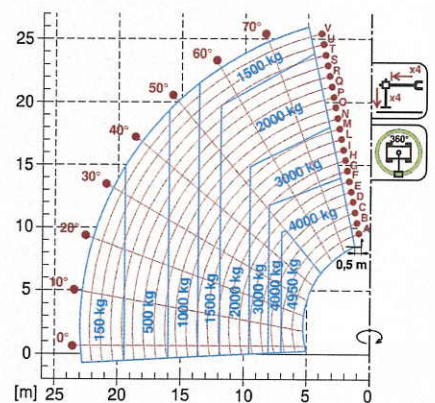
ROTO 40.18



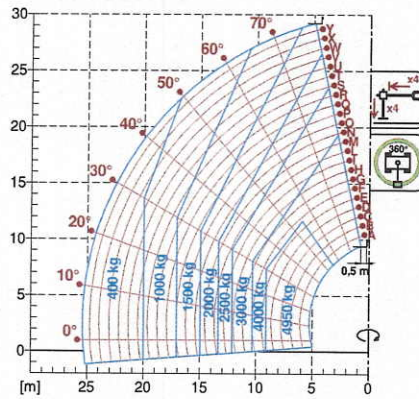
ROTO 50.21



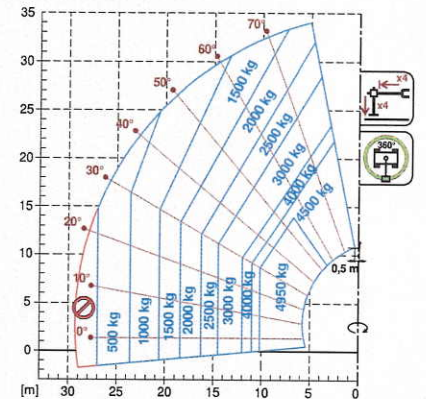
ROTO 50.26



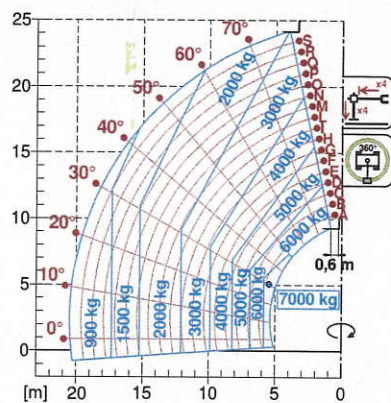
ROTO 50.30



ROTO 50.35



ROTO 70.24



ROTO 70.28

